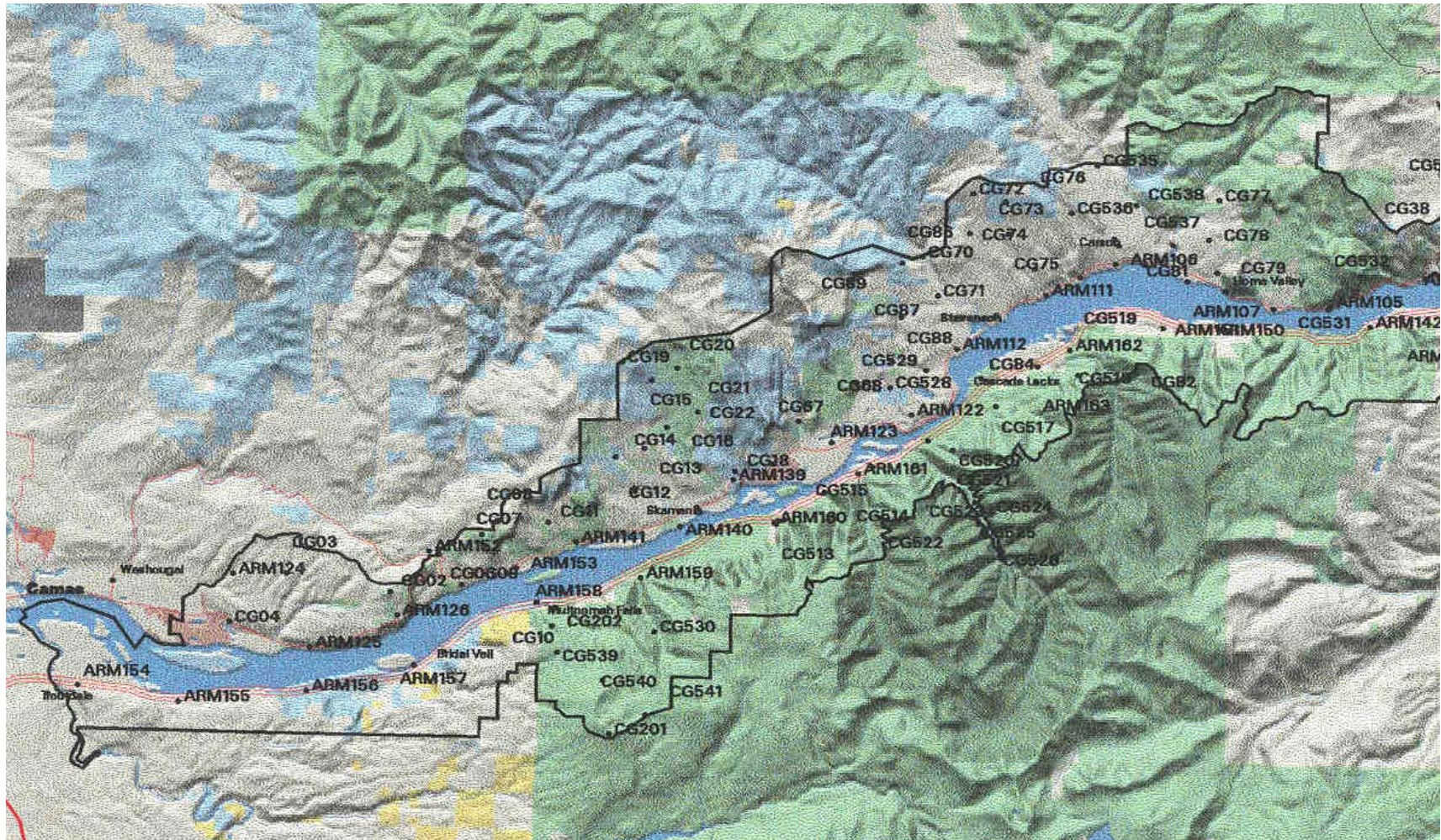


7.0 APPENDICES

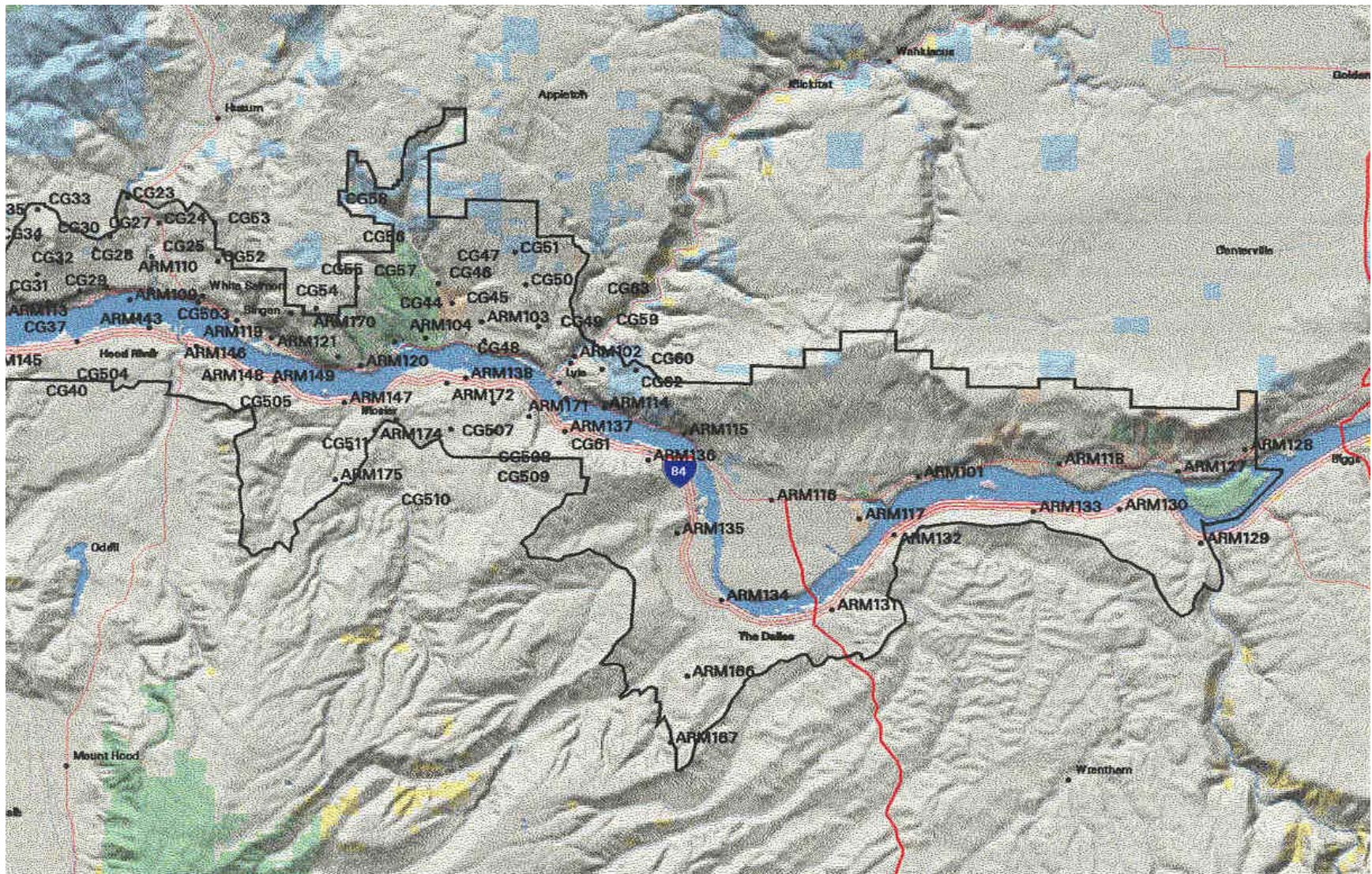
APPENDIX I. MAPS OF PLOT LOCATIONS

The following maps show the general location of the CVS plots comprising the 5.5 km grid, by national forest, and of additional off-frame plots established during the first round of monitoring. Plot numbers correspond to plot numbers in the master database and to the plot rotation schedules in Appendix 2.

Columbia River Gorge National Scenic Area



Map A. Lichen monitoring locations in the Columbia River Gorge National Scenic Area (west).

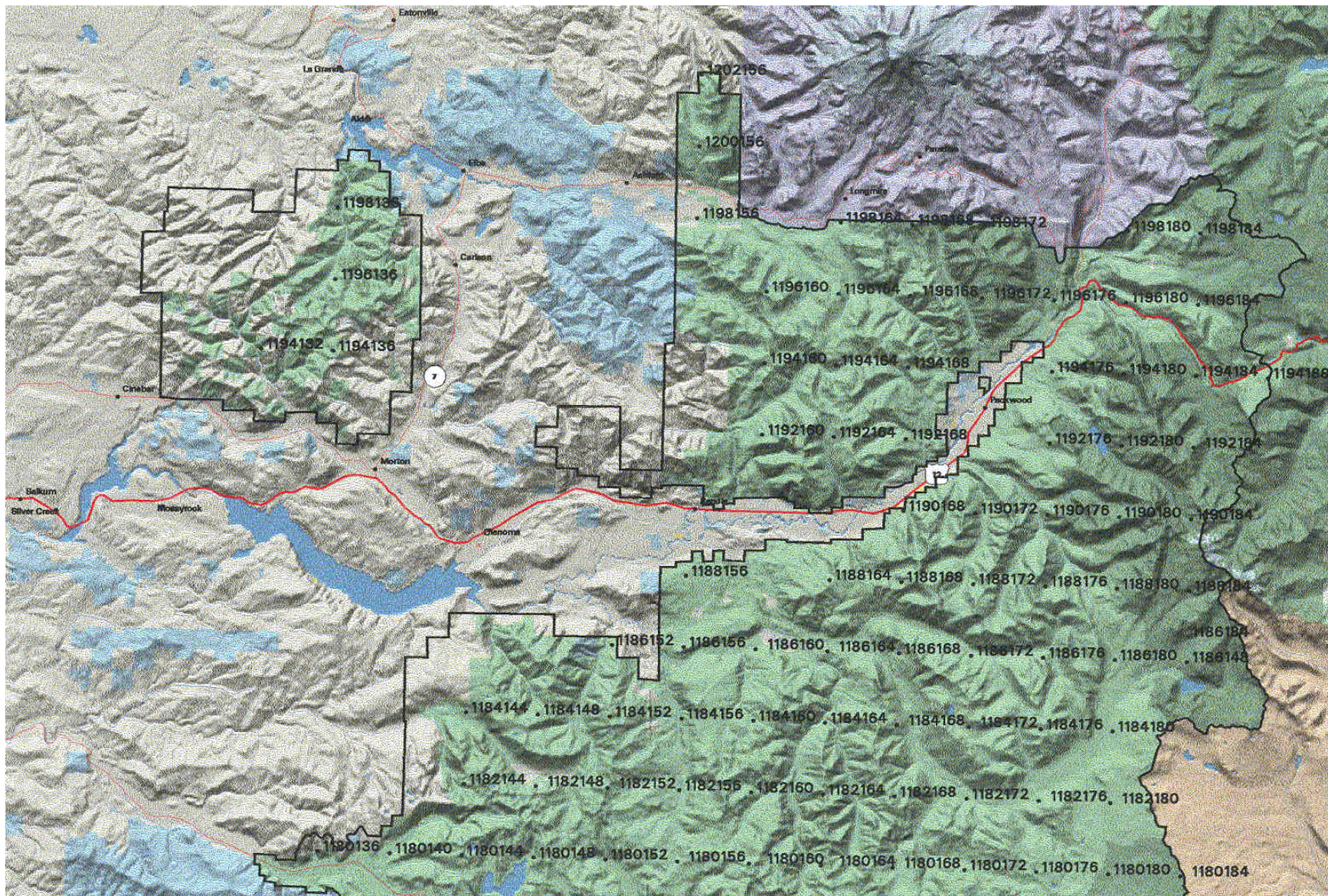


Map B. Lichen monitoring locations in the Columbia River Gorge National Scenic Area (east).

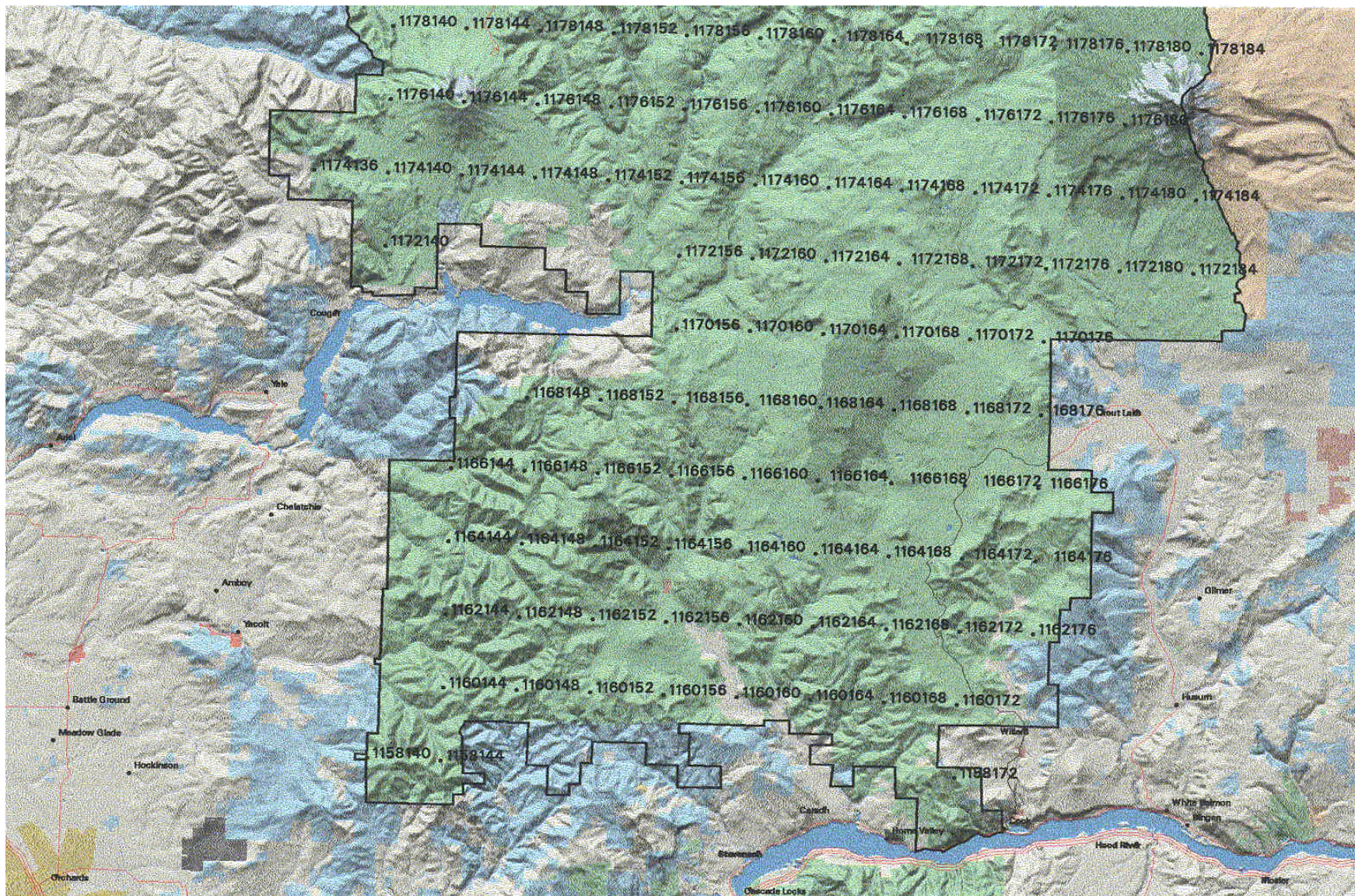
This map displays a geographical area with a network of roads and numerous numbered points. The points are distributed across the map, often following road corridors. Key locations labeled include Redmond, Bend, Port Rock, and various smaller towns like Culver, Garmon, and Terebonte. The map also shows geographical features like hills and water bodies. The numbered points are organized in a way that suggests a systematic survey or mapping process, with numbers often appearing in groups along specific routes.

Map C. Deschutes National Forest lichen monitoring locations.

Gifford Pinchot National Forest

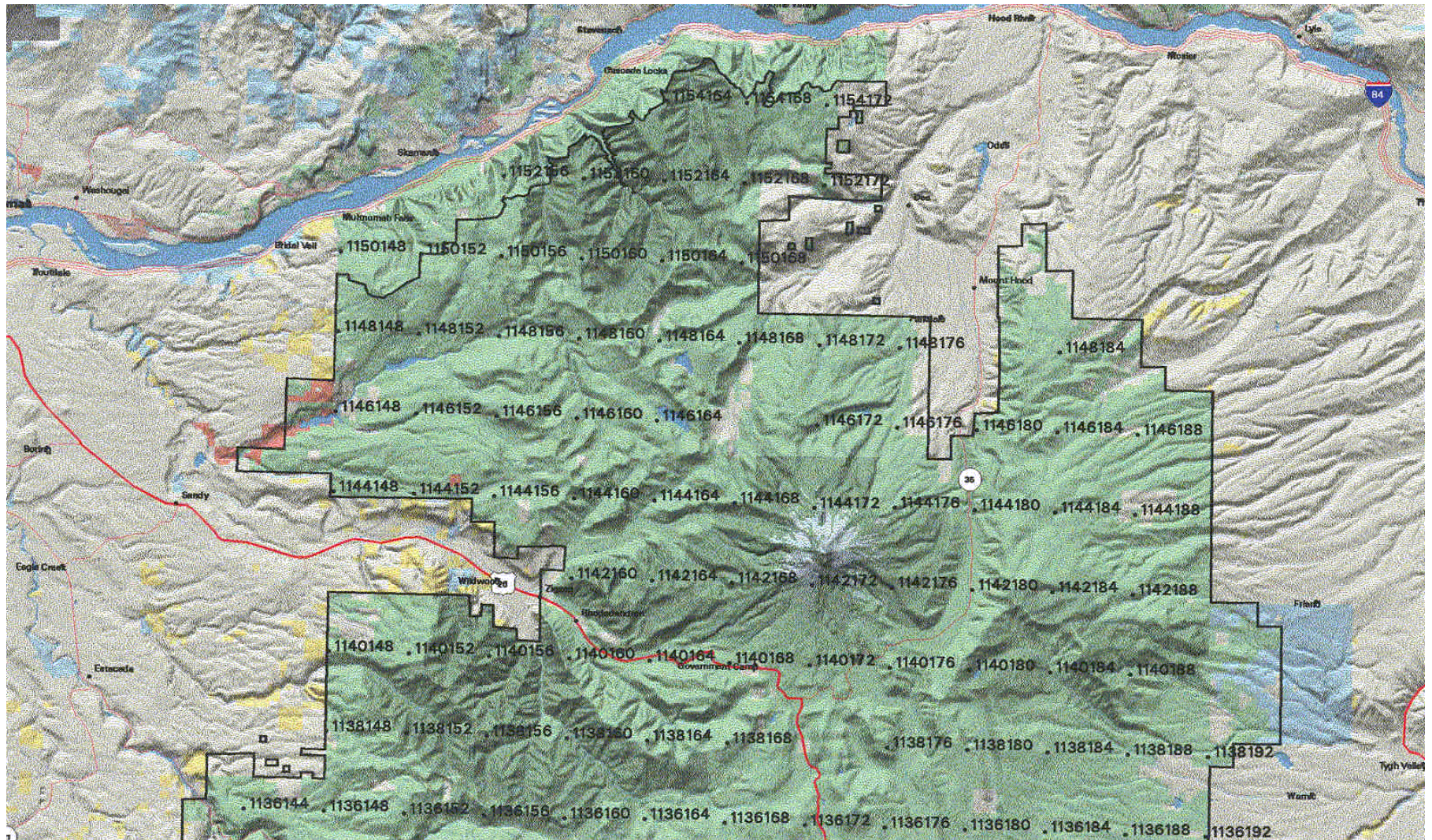


Map D. Gifford Pinchot National Forest lichen monitoring locations (north).

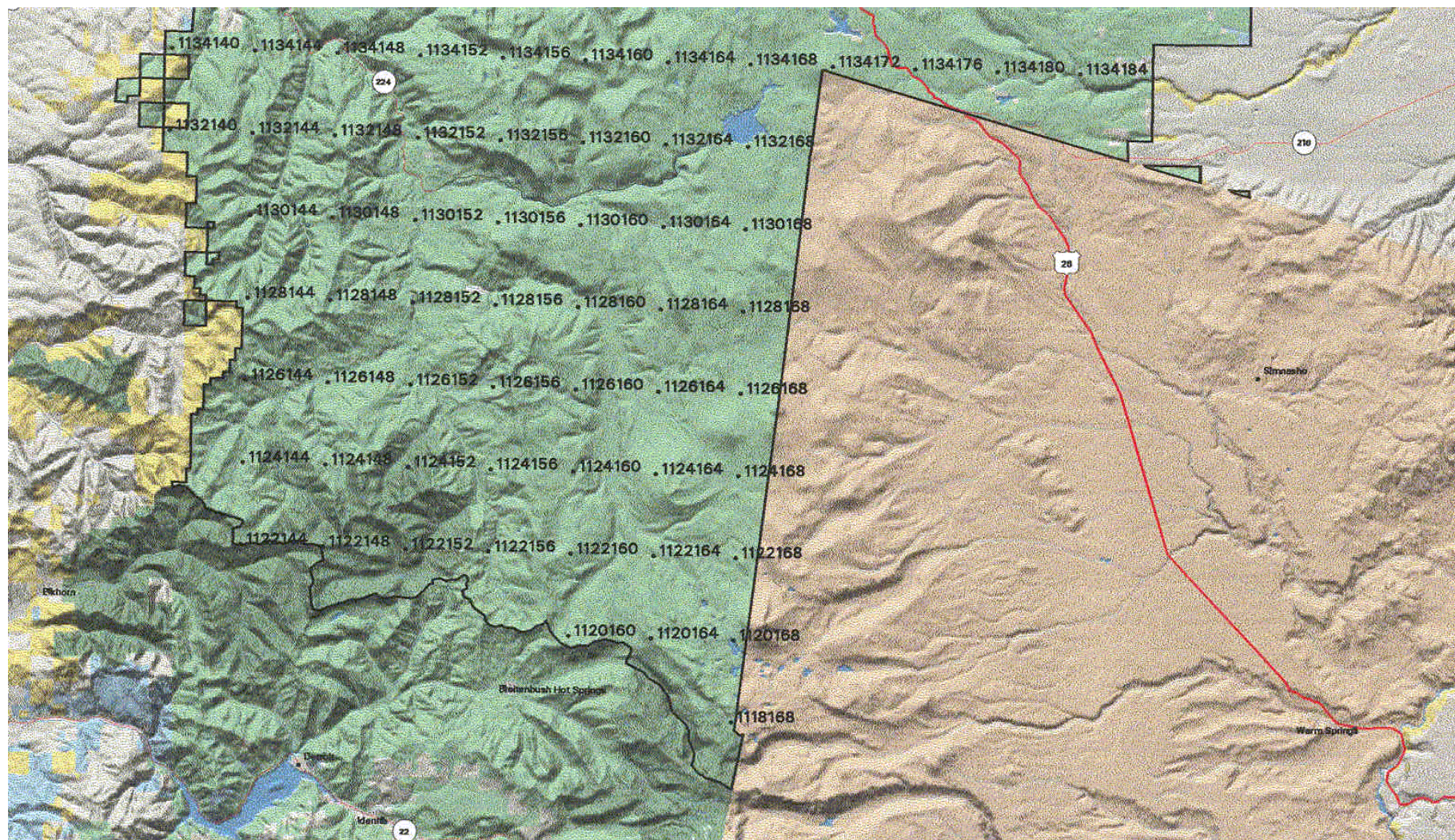


Map E. Gifford Pinchot National Forest lichen monitoring locations (south).

Mt. Hood National Forest



Map F. Mount Hood National Forest lichen monitoring locations (north).



Map G. Mount Hood National Forest lichen monitoring locations (south).